

Agenda Item 6a. Review and Consider Adoption of Major Water Providers



Major Water Providers

Major water providers are “a subset of water user groups (WUGs) and/or wholesale water providers (WWP) **identified by the Regional Water Planning Group (RWPG)** to be particular significance to the region’s water supply”

MWPs will have summary tables in the plan

If an entity is not a MWP, they will still:

- Be planned for and included in the 2026 Plan
- Be eligible for State Funding



2021 Region F Major Water Providers

- Colorado River Municipal Water District
- Brown County Water Improvement District No. 1
- City of Odessa
- City of Midland
- City of San Angelo



2026 Proposed Region F Major Water Providers

- Colorado River Municipal Water District
- Brown County Water Improvement District No. 1
- City of Odessa
- City of Midland
- City of San Angelo



Agenda Item 6a. Review and Consider Adoption of Major Water Providers



Agenda Item 6b. Review of Infeasible Water Management Strategies from the 2021 Region F Plan



Review of Infeasible Water Management Strategies

New legislative requirement for this round of planning

Infeasible WMSs include those WMSs where proposed sponsors have not taken an affirmative vote or other action to make expenditures necessary to construct or file applications for permits required in connection with implementation of the WMS on a schedule in order for the WMS to be completed by the time the WMS is needed to address drought in the plan.



Implications of Infeasible Water Management Strategies

- If any strategies are found to be infeasible, the RWPG must amend the 2021 Plan
- Plan amendment is due June 5, 2024 (within 90 days of the Technical Memorandum)



Review of Infeasible Water Management Strategies

- **Not** required for strategies or projects that do not require a permit or involve construction
 - Based on this guidance, all water conservation related strategies → feasible
- TWDB recognized that information may be difficult to obtain for some categories of water users, such as those associated with county-water water user groups that are to be implemented by private parties
 - Based on this guidance, all non-municipal county aggregated water user groups strategies (e.g. mining or manufacturing to drill a well) → feasible

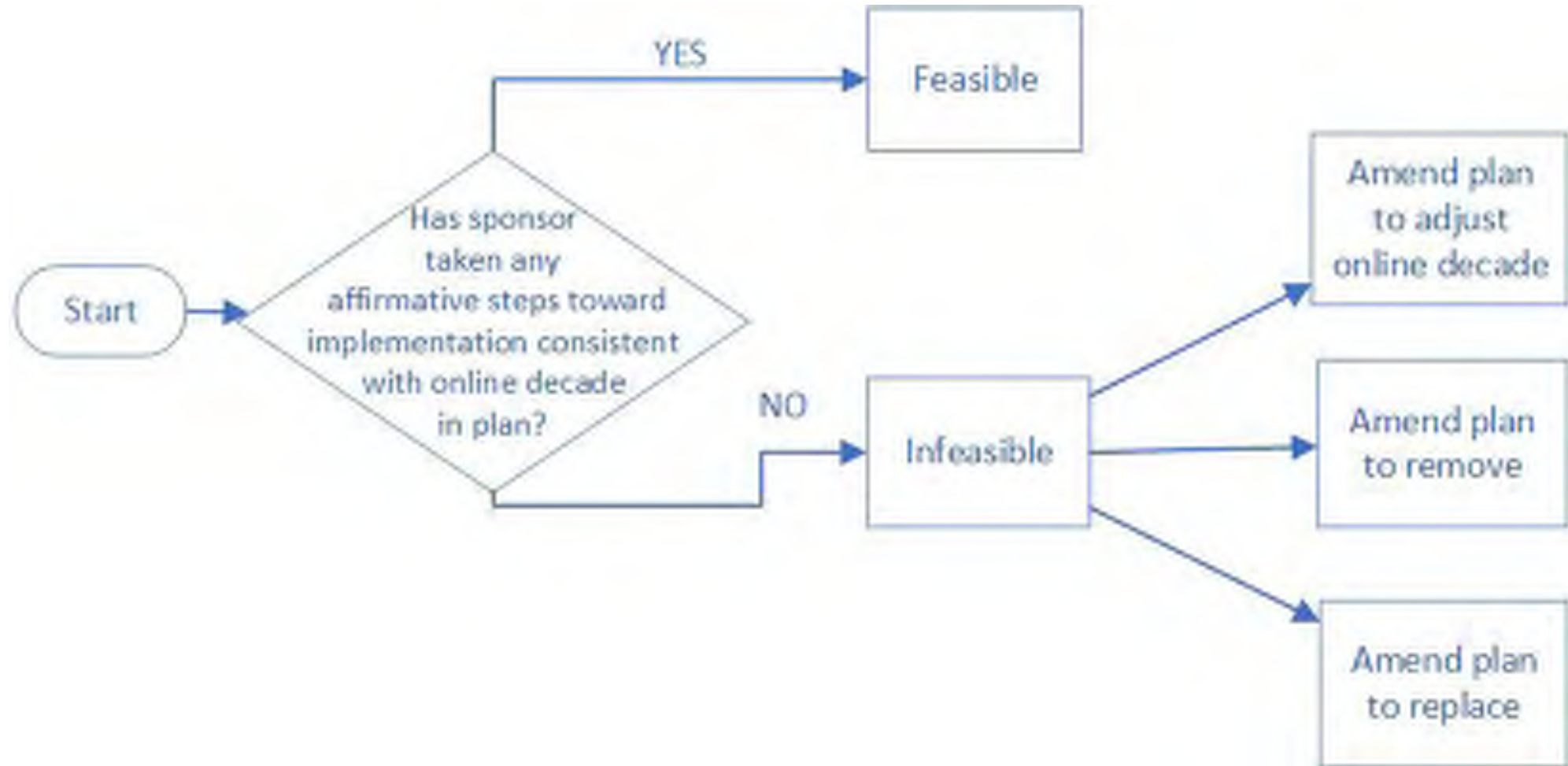


Strategies for Infeasibility Review

- Strategies/projects in 2021 Plan must reviewed if:
 - Require a permit and/or involve construction
 - Have an identifiable sponsor
 - Are shown to be online in 2020 or 2030 **or**
 - Are related to new major reservoirs, seawater desalination, direct potable reuse, brackish groundwater, ASR, and out of state water transfers



Infeasibility Analysis Process



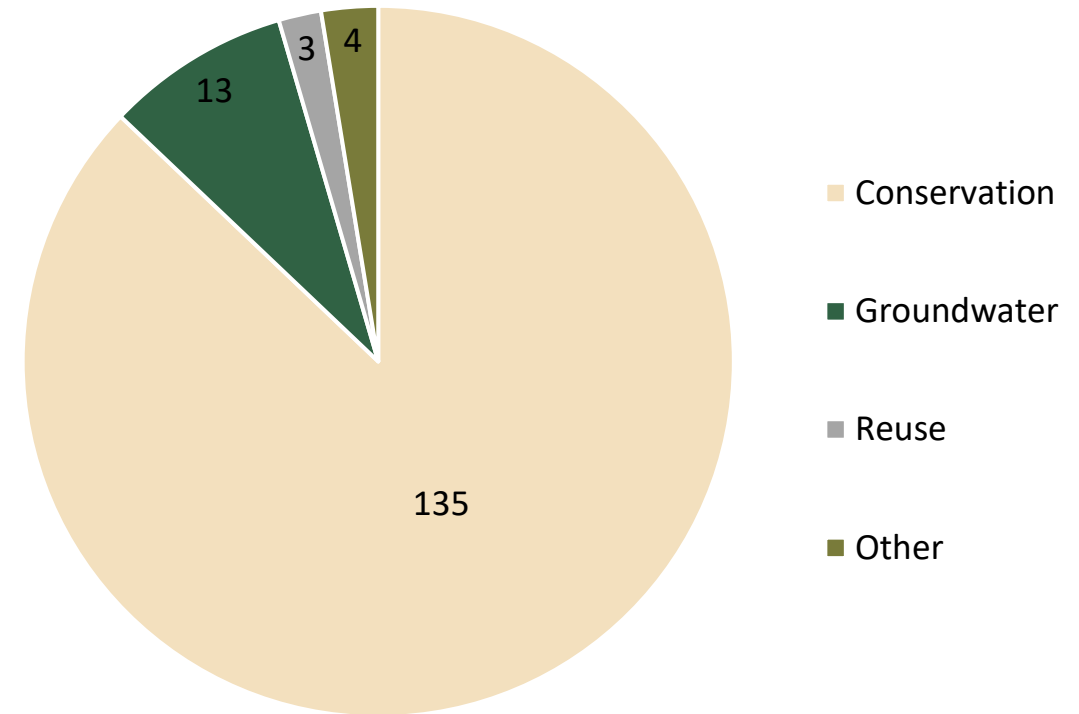
Infeasibility Analysis Process

- A strategy/project can be considered feasible if “affirmative steps” have been taken by the sponsor including but not limited to:
 1. Spending money on the strategy or project
 2. Voting to spend money on the strategy or project
 3. Applying for a federal or state permit for the strategy or project



Infeasibility Review Results

- 155 Region F strategies from 2021 Plan flagged by TWDB for review
 - 135 Conservation
 - 13 Groundwater
 - 1 Indirect Potable Reuse
 - 2 Direct Non-Potable Reuse
 - 3 Reuse
 - 4 Other Strategies
 - 3 Brush Control
 - 1 Weather Modification



Infeasibility Review Results

155 Total Region F Strategies Identified to Require Infeasibility Review

135

- Conservation related → feasible

5

- No identifiable sponsor (e.g. mining/manufacturing) → feasible

11

- Confirmed affirmative action taken by the sponsor to implement the project → feasible

4

- Unable to confirm affirmative action taken to implement → likely infeasible and plan will need to be amended to move the WMS to 2030



Infeasible Strategies

Junction - Develop Additional Edwards-Trinity Plateau Aquifer Supplies

- Drill 7 new wells, 370 ac-ft per year yield
- City has not yet moved forward on the strategy
- Propose to move online date from 2020 to 2030
- Will create an unmet need of about 200 ac-ft in 2020

Balmorhea - Develop Edwards-Trinity Plateau Aquifer Supplies

- Drill 2 new wells, 150 ac-ft per year yield
- City has not yet moved forward on the strategy
- Propose to move online date from 2020 to 2030
- Will create unmet need of about 100 ac-ft in 2020



Infeasible Strategies

Bronte - Develop Other Aquifer Supplies in Southwest Coke County

- Drill 5 new wells, 800 ac-ft per year yield
- City is now focusing on developing groundwater supplies in Nolan County instead
 - This was an alternative WMS with Robert Lee in 2021 plan
- Propose to amend the plan to substitute the alternative strategy now being pursued as recommended

Mitchell County SEP – Reuse Sales from Colorado City

- Colorado City planned to sell 500 ac-ft per year of WW effluent to FGE for the new FGE Texas plants in Mitchell County
- FGE demands have never materialized so project has not moved forward
- Propose to amend the plan to remove the strategy
- Will show an unmet non-municipal need on paper but since plant does not exist yet, there are no true needs



Agenda Item 6c. Review and Adopt Process for Identifying of Potentially Feasible Water Management Strategies for the 2026 Region F Plan

From TAC 357.12(b):

“A RWPG shall hold a public meeting to determine the process for identifying potentially feasible water management strategies; the process shall be documented and shall include input received at a public meeting; ...”



Seek Input → Identify PF WMSs



Evaluate WMSs

Quantity, Cost, and Reliability
Environmental Factors
Impacts
Other Relevant Considerations



Seek Input



Recommended
WMS



Alternative
WMS



Considered &
Not Selected
WMS



DRAFT Methodology

1. Identify entities with needs
2. Review recommended strategies in 2021 plan
3. Review new studies/reports
4. Identify potential new or changed strategies
5. Review strategy types appropriate for Region F
6. Contact entities for input
7. Contact RWPG representatives for county-wide WUGs
8. Verify recommendations



Considerations for Feasible Strategies

- A strategy must use proven technology
- A strategy should have an identifiable sponsor
- Must consider end use. Includes water quality, economics, geographic constraints, etc.
- Must meet existing regulations
- 24 Water Management Strategy Types required to consider by TWDB
 - Not all are applicable to every situation
 - Not all are applicable to Region F



Feasible Strategy Types

- Strategy Types Likely Not Appropriate for Region F
 - Drought Management (not a long-term supply strategy)
 - New Surface Water Supplies
 - Enhancement of Yields
- Strategy Types Not Appropriate for Region F
 - Marine Seawater Desalination
 - Cancellation of Water Rights
 - Rainwater Harvesting



Agenda Item 6c. Review and Adopt Process for Identifying of Potentially Feasible Water Management Strategies for the 2026 Region F Plan



Agenda Item 6d. Consider approval of a partial scope of work for Task 5B and authorize the political subdivision to submit a request to the TWDB for a notice proceed with the partial scope of work for Task 5B



Task 5B: Strategy Evaluation

- Requires the region to develop a specific scope of work
- Submit to TWDB
- Receive notice to proceed before work
- Region F proposing a partial authorization for some strategies that need to be worked on earlier in the planning process:
 - Subordination
 - Conservation
 - Reuse
 - Database Entry
 - RWPG Coordination and Documentation
- Phase I funding of \$160,000 requested now
- Remainder of funding to be requested later in the planning process after the needs evaluation and potentially feasible strategies are identified for evaluation



Agenda Item 6d. Consider approval of a partial scope of work for Task 5B and authorize the political subdivision to submit a request to the TWDB for a notice proceed with the partial scope of work for Task 5B



Agenda Item 6e. Update on Water Availability



Regional Water Planning Process

Population and Demand Projections

Source Water Availability

Allocation of Existing Supplies (limited by water rights, infrastructure, contracts, etc.)

Water Needs Analysis

Water Management Strategies

Tech Memo Due
March 4, 2024



Existing Supplies: Source Water Availability



Surface Water



Groundwater



Region F Existing Surface Water Supplies



Region F Existing Surface Water Supplies

- TWDB Rules Require the use of Water Availability Model (WAM) Run 3
- Strict priority order
- Very few sources in Region F have availability under this analysis
- Two major river basins in Region F
 - Rio Grande
 - Colorado



Rio Grande River Basin Existing Surface Water Supplies



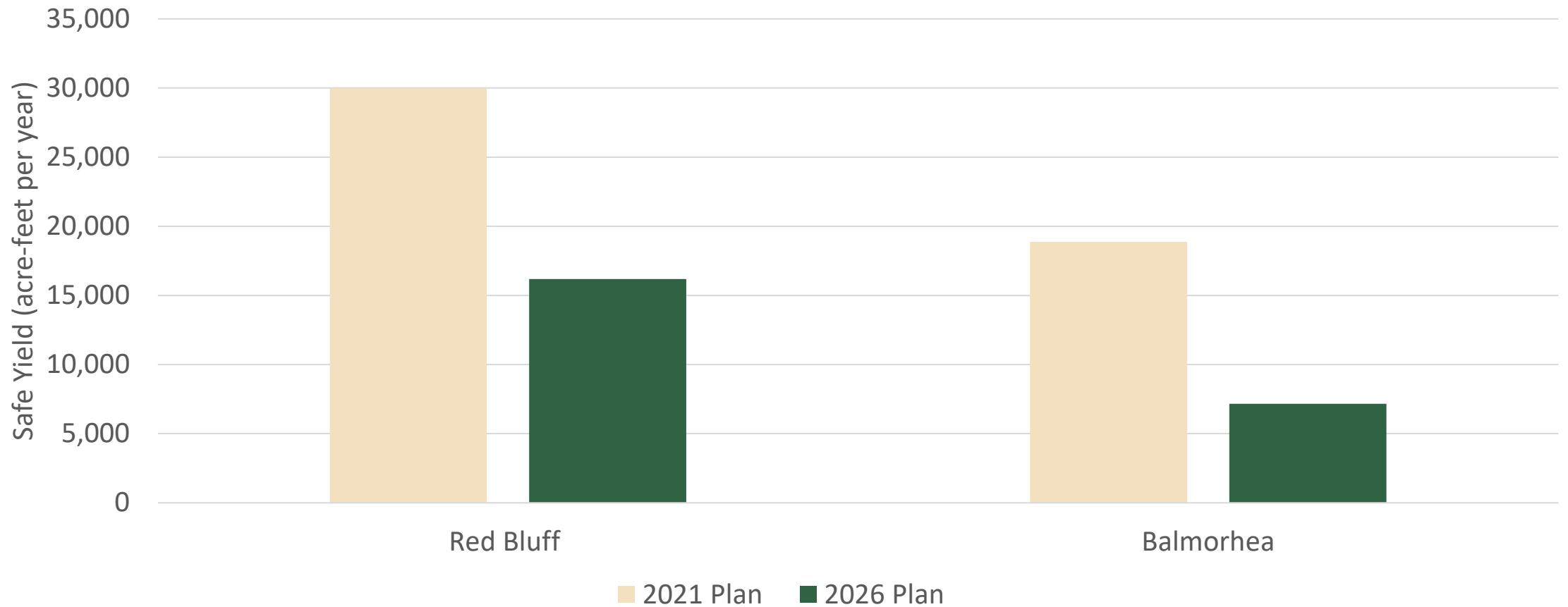
Texas
Commission
on
Environmental
Quality

- TCEQ recently published a new version of the Rio Grande WAM
- Includes hydrology through end of 2018
- Previous version only had hydrology through 2000



Rio Grande Reservoir Supplies

2030 Safe Yield - WAM Run 3



Colorado River Basin Existing Surface Water Supplies



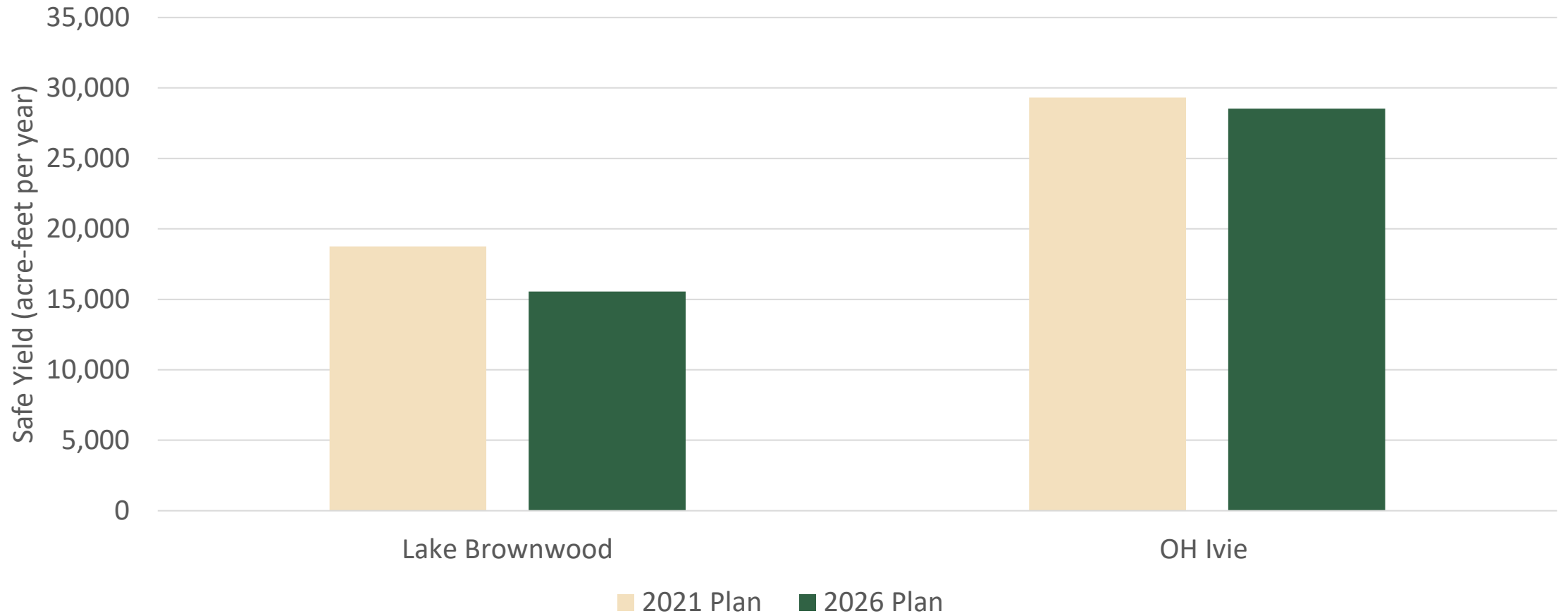
Texas
Commission
on
Environmental
Quality

- TCEQ published version of the Colorado WAM
- Includes hydrology through end of 2016
- Only two reservoirs have safe yield using WAM Run 3
 - Lake Brownwood
 - Lake O.H. Ivie



Colorado River Basin Existing Surface Water Supplies

2030 Safe Yield - WAM Run 3



Colorado River Basin Subordination

- Major surface water strategy in Region F
- Lower Colorado Basin (Region K) is subordinated to the Upper Colorado Basin (Region F) in the WAM
- Will be reevaluated for the 2026 Plan as part of the Task 5B authorization
- Plan to use a most recently updated version of the WAM
 - Hydrology extended through 2016

