

A silhouette of an oil pumpjack against a cloudy sky. The pumpjack is a large mechanical device used for extracting oil from a well. It consists of a long walking beam pivoted at the center to a vertical support. The other end of the beam is connected to the wellhead, and the weight of the oil in the well causes the beam to move up and down, pumping the oil to the surface. The sky is a mix of light and dark clouds, suggesting a dawn or dusk setting. The pumpjack is the central focus of the image, with its complex structure of beams and supports clearly visible.

2026 Region F Water Plan

Region F Water Planning Group Meeting

July 20, 2023

Population and Municipal Demands

Overview and Recommended Revisions

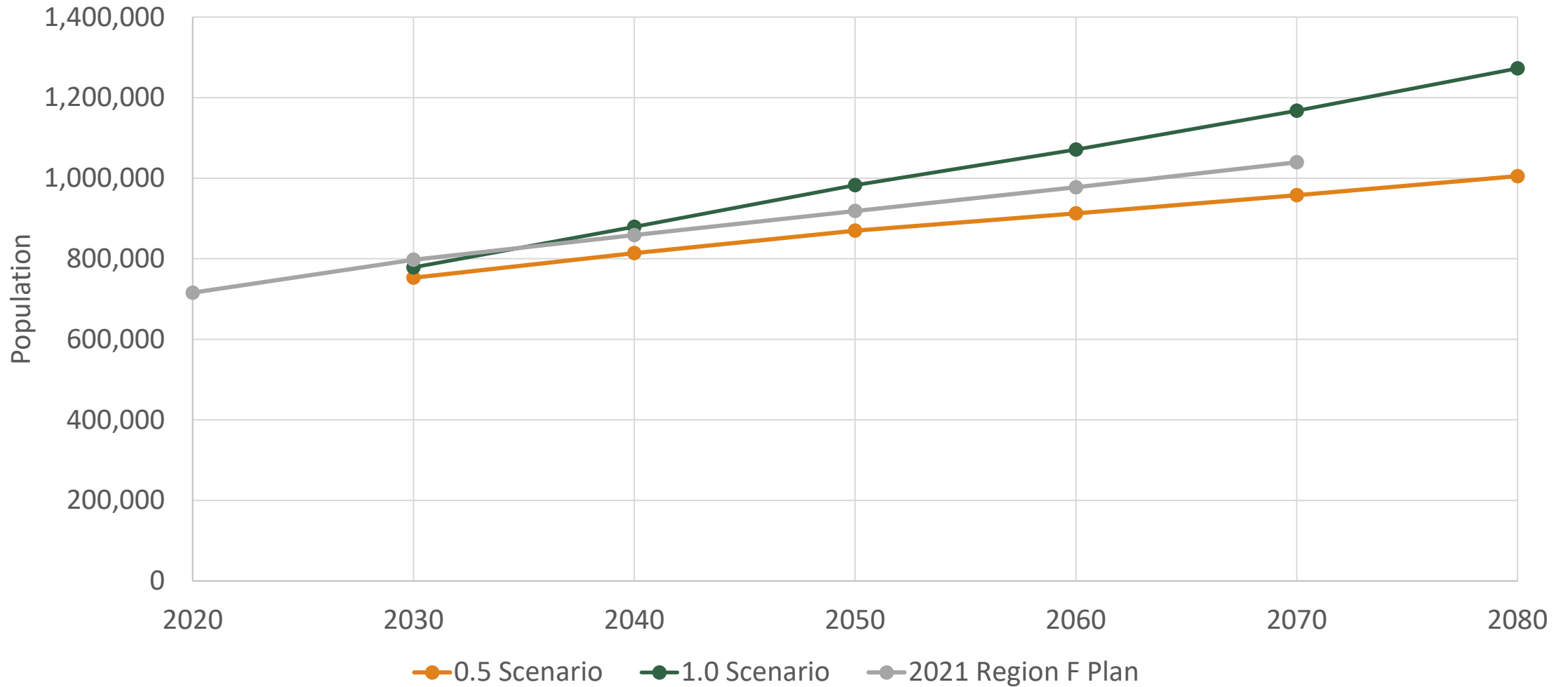


Population Projections

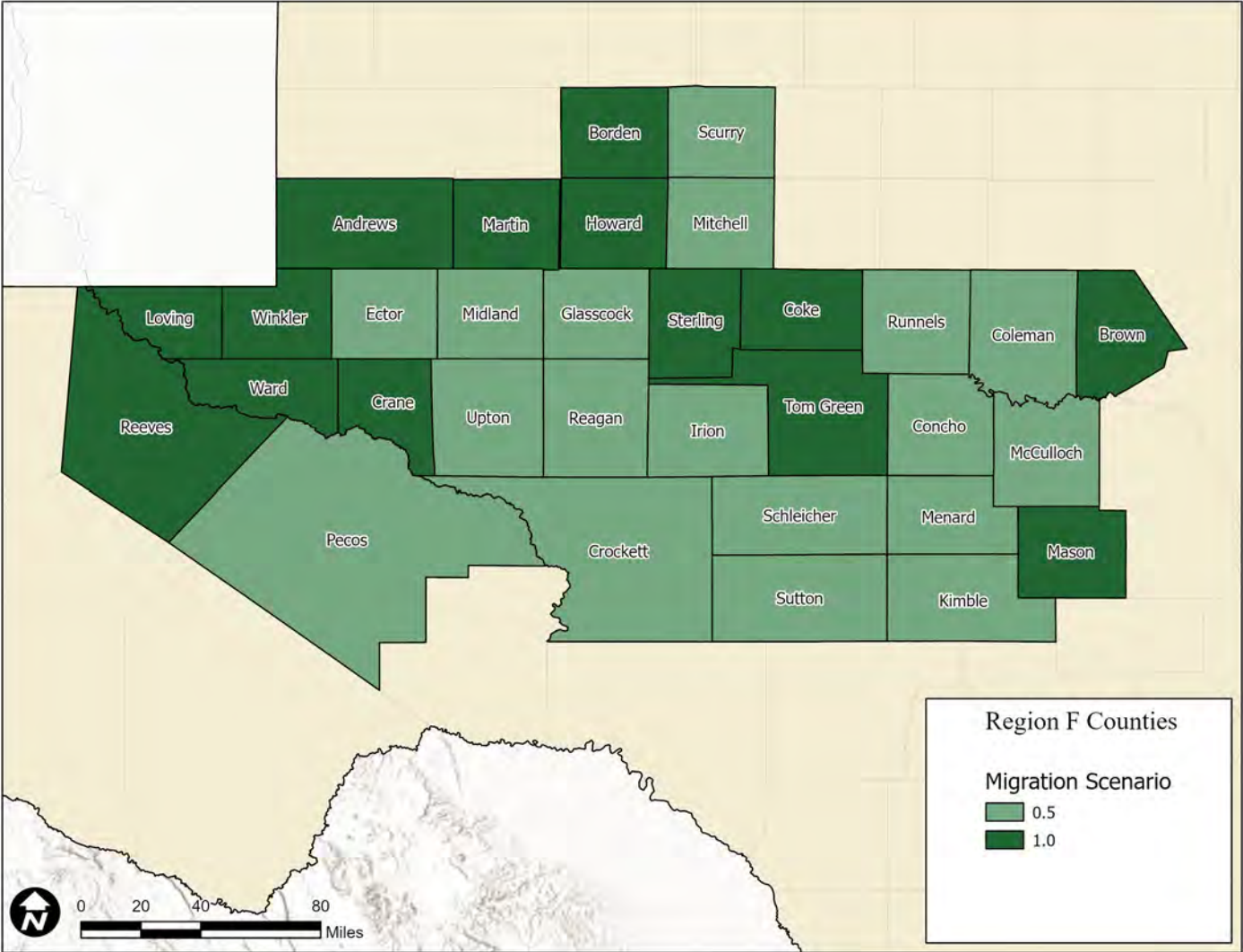
- Based on Texas Demographic Center's (TDC) county-level projections
- Cohort component method
 - Age, sex, race, ethnicity
 - Birth rates, death rates, migration rates
- Two migration scenarios
 - 0.5 migration 2010-2020
 - 1.0 migration 2010-2020



Draft Region F Population Projections



Migration Scenario Selection by County



Population and Municipal Demand Projections

Population
Projections

X

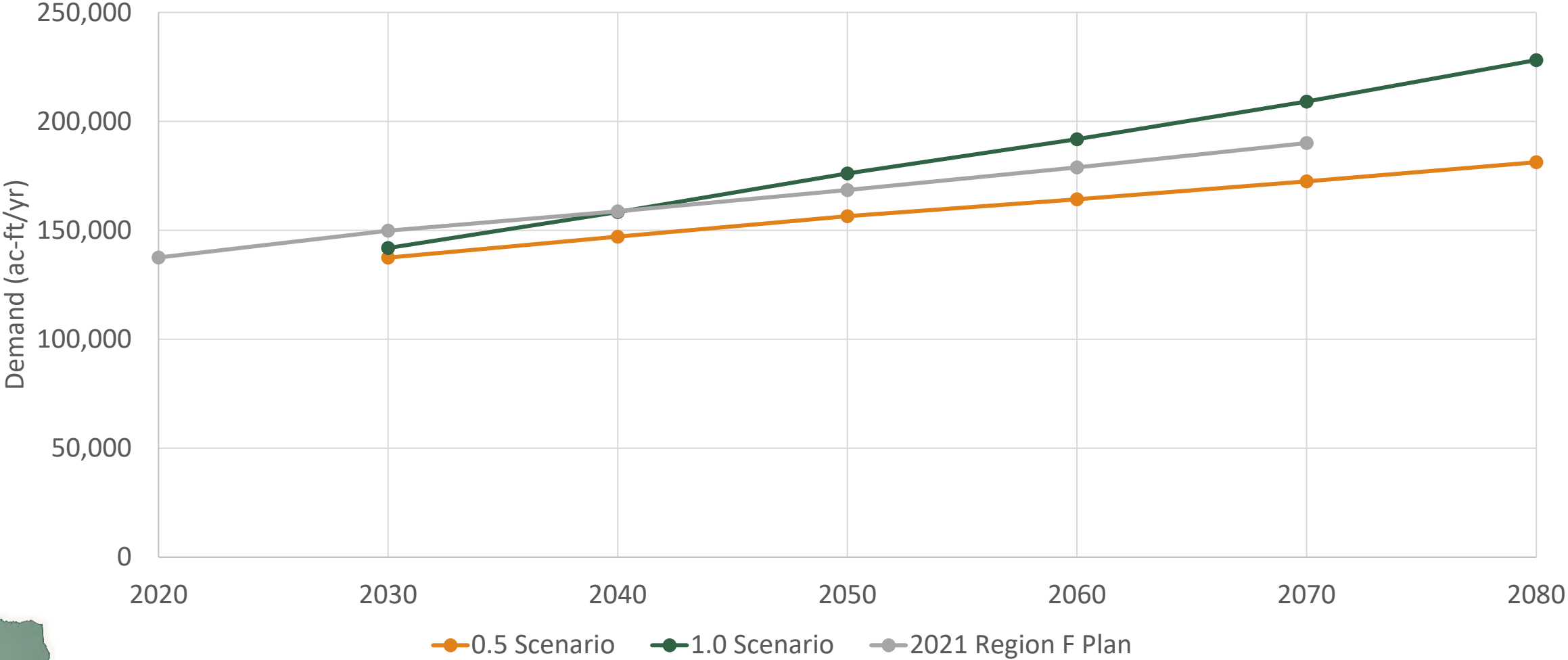
Dry Year
Water Use Per
Person (GPCD)

=

Municipal
Demand
Projections



Draft Region F Municipal Demand Projections



Outreach to Water User Groups and Wholesale Providers

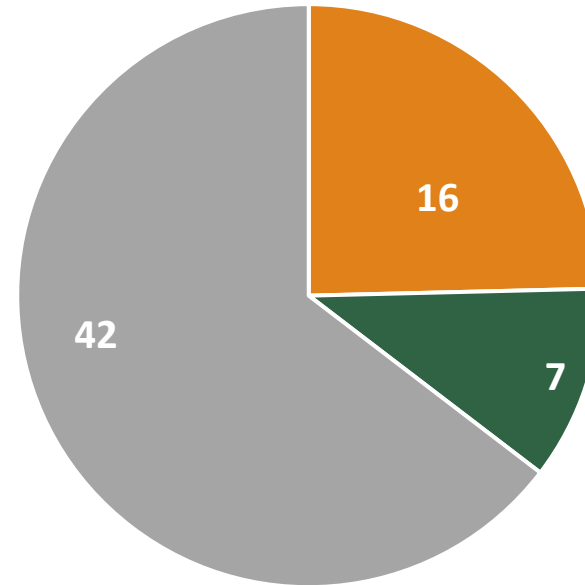
- Survey sent to all Water User Groups on April 21, 2023
 - Follow up email and reminders
 - Phone call follow ups to all users with more than 5,000 people
- Met with some larger water providers
 - BCWID #1
 - CRMWD
 - Midland
 - Odessa
 - San Angelo



Survey Results

35%

Response Rate



- Approved Population and Demand Projections
- Revisions Requested
- No Response



Population Revision Requests

- **BCWID No. 1 Customers**
 - 2022 actual water use data showed that demands were too low for several customers
 - **Bangs** – adjusted population to match more recently reported TWDB population
 - **Early** – adjusted population based on 2022 census estimate
- **Eden**
 - Increased population to include the Eden Detention center

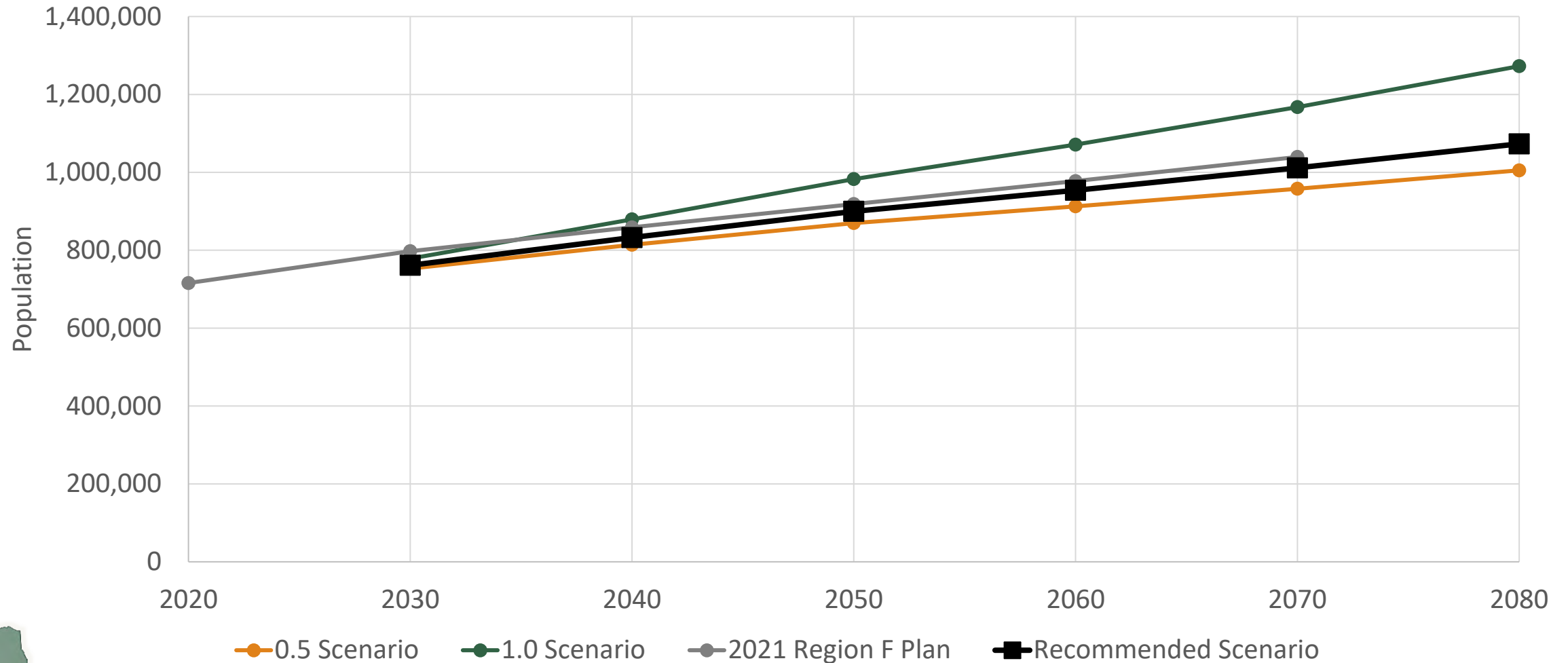


Population Revision Requests

- Odessa
 - Adjusted projections through 2050 to reflect 2019 Water Master Plan
 - Then showed slower growth from 2050-2080
 - 2080 population of ~200,000
- Pecos County Fresh Water
 - Requested increase in population based on meter count data
- Corresponding adjustments to County-Others (except Concho)



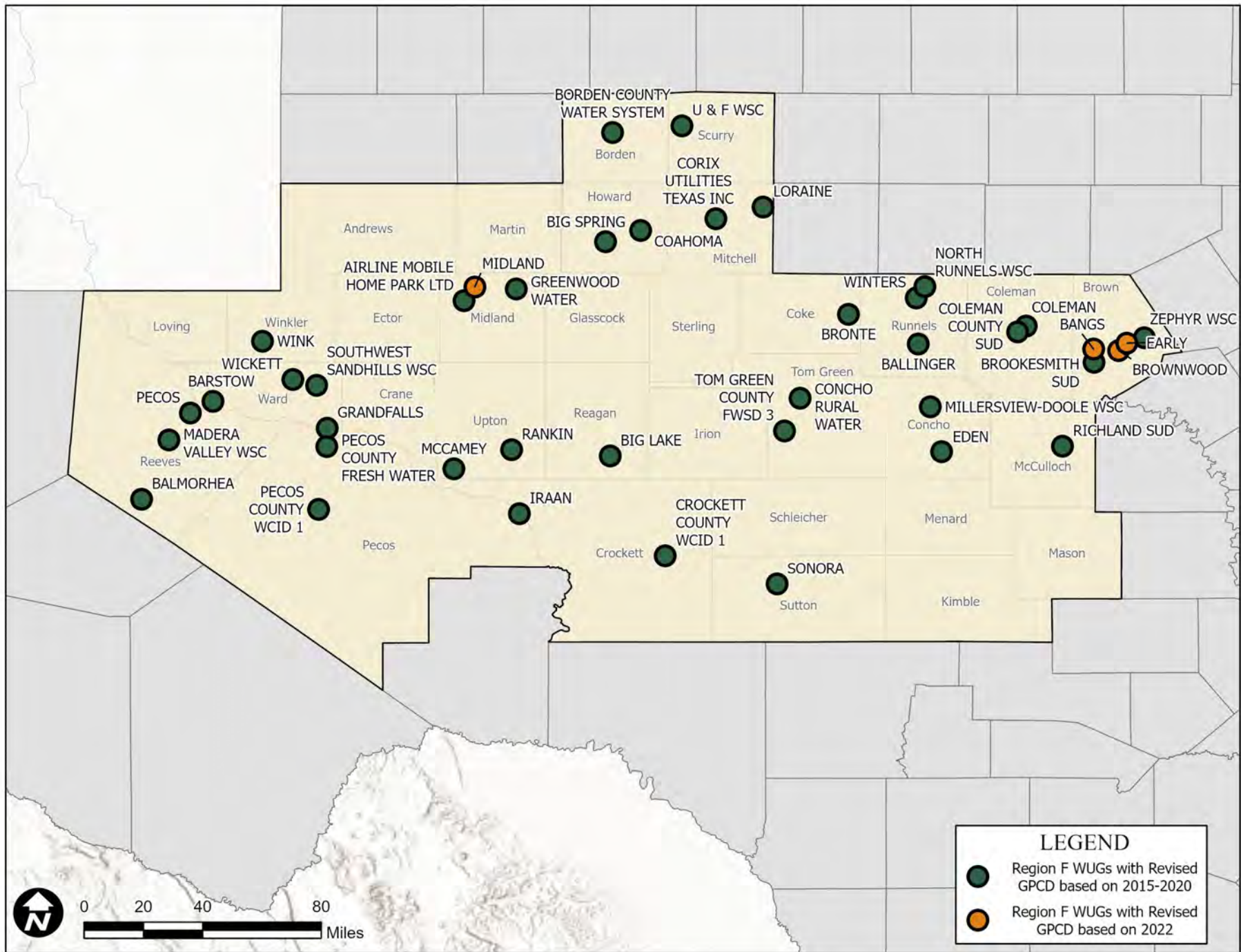
Summary of Population with Changes



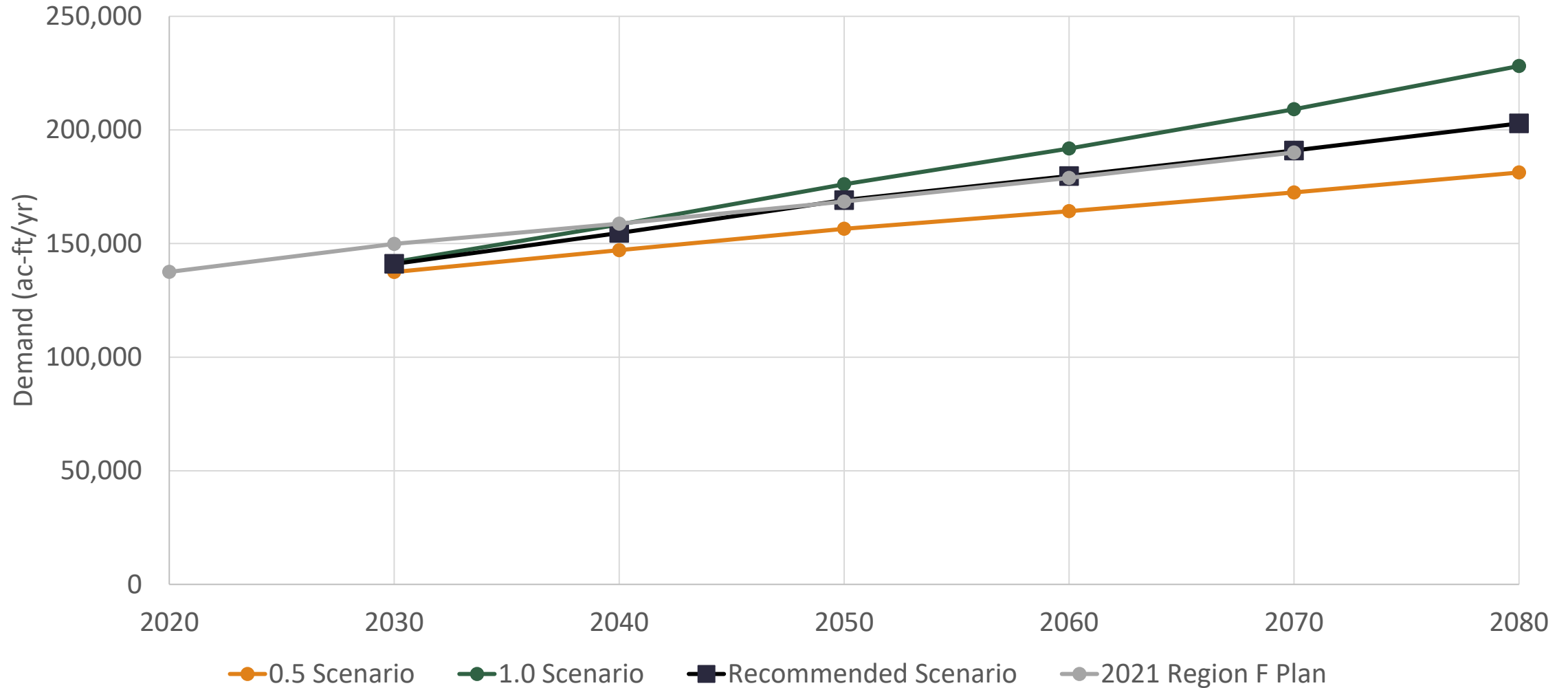
Demand Revision Requests

- **BCWID No. 1 Customers**
 - 2022 actual water use data showed that demands were too low for several customers
 - Adjust gpcd for Brownwood, Bangs, and Early
- **Midland**
 - Requested to use 2022 gpcd of 142
 - Lower than original draft gpcd of 172





Summary of Municipal Demand with Changes



Path Forward

- RWPG consider approval today
- Submit requested changes to TWDB by August 11, 2023
- TWDB reviews and provides feedback



6a. Consider adoption of proposed changes to the draft population and municipal demands for the 2026 Region F plan and authorize consultant to work with TWDB to make minor adjustments as needed



Surface Water Hydrologic Variance



Surface Water in Regional Planning

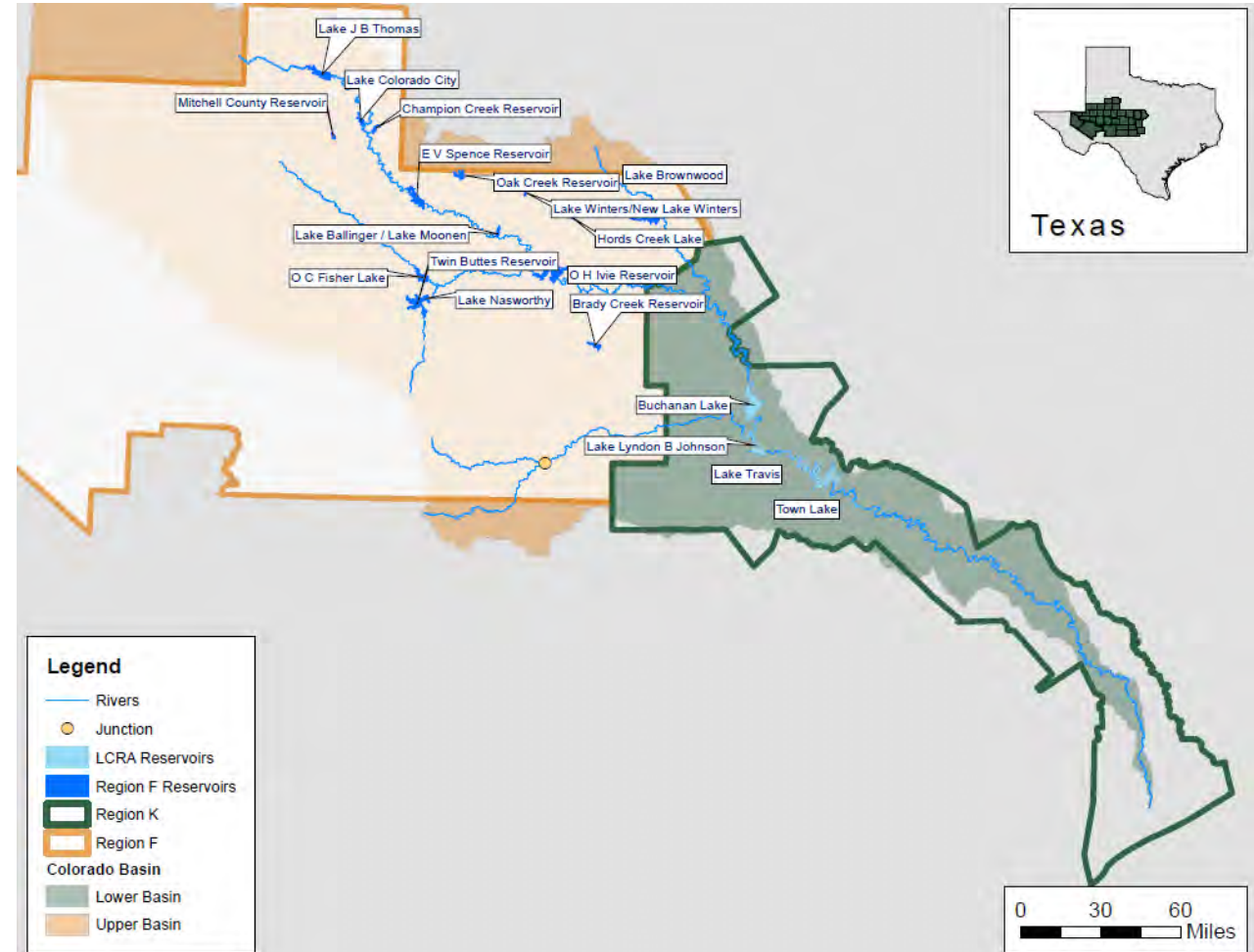
- TWDB requires the use of the TCEQ Water Availability Model (WAM) Run 3 (Full Appropriation)
 - Assumes first in right is first in time
 - All water rights are fully used
- To make adjustments, need to request a hydrologic variance from the TWDB



Region F Hydrologic Variances

Colorado Basin

- Safe yield
- Subordination
 - Makes the Upper Basin (Region F) senior to the Lower Basin (Region K)
 - Junction, Brady included in Upper Basin in Region F request
 - Pecan Bayou – mutually agreed on terms for priority calls



Region F Hydrologic Variances

- Rio Grande Basin
 - Safe yield
 - Avoid futile calls on spring flow
- Brazos Basin
 - Safe yield
 - Adopt Region G modifications



6b. Consider adoption of hydrologic variance requests and authorize consultant to work with TWDB to make minor adjustments as needed

